

Prescription Drug Monitoring Program Surveillance

Opioid Prescription Pattern Pre- and Post- Implementation of AB474

2017-2020

January 1, 2017 - May 31, 2020



Office of Analytics

Department of Health and Human Services

Steve Sisolak

Governor

State of Nevada

Richard Whitley, MS

Director

Department of Health and Human Services

Department of Health and Human Services
Office of Analytics

Prescription Database Monitoring Program

Data Source: Department of Health and Human Services, Prescription Drug Monitoring Program System.

A new patient ID system was implemented in Quarter 1 of SFY2019. As a result, the values listed here may slightly differ from previous versions.

Data Provided by: Office of Analytics.

Opioid analgesic controlled substance prescriptions dispensed including schedule II, III, and IV prescription opioids dispensed to patients, as entered into the state prescription drug monitoring program (PDMP) system.

Data are total number of prescriptions filled to Nevada residents, this does not capture whether the medications were taken as prescribed or taken by the prescribed patient. A person can be included for more than one prescription and therefore the not mutually exclusive.

Please use caution when interpreting rates corresponding to small counts.

Impact Analysis: Opioid Prescription Patterns Pre and Post Implementation of AB 474

All Opioid Drugs (Including Medication Assisted Treatment)

Prescription Drug Monitoring Program Data, January 2017 - May 2020

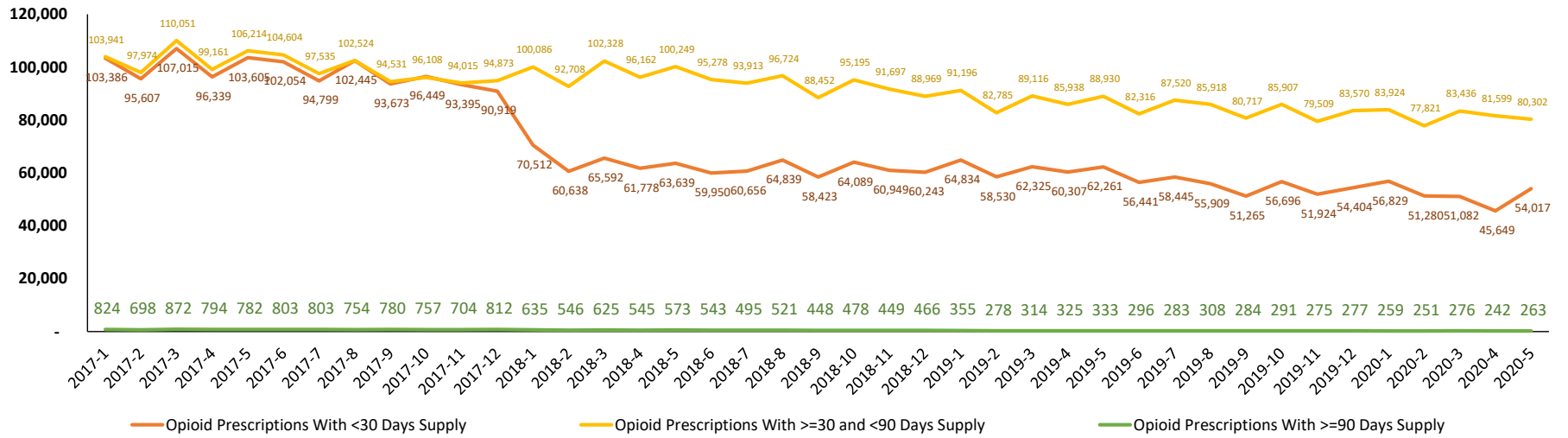
Summary Highlights:

- From January of 2017 to May of 2020, there was roughly a 38% decrease in the rate of opioid prescriptions per 100 Nevada residents.
 - Opioid prescriptions with less than a 30 days supply decreased by 48%.
 - Opioid prescriptions with greater than or equal to a 30 days supply and less than a 90 days supply decreased by 23%.
 - Opioid prescriptions with greater than or equal to a 90 days supply decreased by 68%.
- All Nevada counties observed a decrease in both the number of and rate of opioid prescriptions by month, with the decrease in rates ranging from 26% (Lincoln) to 64% (Esmeralda).
- The number of unique patients receiving less than 50 MMEs per month decreased 27% from January 2017 to May 2020.
- The number of unique patients receiving 50 MMEs to 90 MMEs per month decreased approximately 48% from January 2017 to May 2020.
- The number of unique patients receiving greater than 90 MMEs per month decreased 51% from January 2017 to May 2020.
- Diagnosis information is available for 2019 only:
 - Diseases of the Nervous System, Pain (ICD-10-CM code G89) was the most common diagnosis code on prescriptions with less than a 30 days supply, the fourth most common diagnosis code on prescriptions with a 30-89 days supply, and the second most common diagnosis code on prescriptions with a 90 day or greater days supply.
 - Dorsalgia (back pain) was the second most common diagnosis code on prescriptions with less than a 30 days supply, the most common diagnosis code on prescriptions with a 30-89 days supply, and the most common diagnosis code on prescriptions with a 90 day or greater days supply.
- The number of individuals who were co-prescribed Opioid and Benzodiazepines during the same month also decreased significantly, by 62% in Nevada overall.

Opioid Prescription Counts and Rates per 100 Population For Less Than and Greater Than 30 Days and 90 Days by Month, January 2017 - May 2020

	Opioid Prescriptions With <30 Days Supply		Opioid Prescriptions With >=30 and <90 Days Supply		Opioid Prescriptions With >=90 Days Supply		Total Opioid Prescriptions by Month	
	N	Rate per 100 Population	N	Rate per 100 Population	N	Rate per 100 Population	N	Rate per 100 Population
2017-1	103,386	3.46	103,941	3.48	824	0.03	208,151	6.97
2017-2	95,607	3.20	97,974	3.28	698	0.02	194,279	6.50
2017-3	107,015	3.58	110,051	3.68	872	0.03	217,938	7.30
2017-4	96,339	3.23	99,161	3.32	794	0.03	196,294	6.57
2017-5	103,605	3.47	106,214	3.56	782	0.03	210,601	7.05
2017-6	102,054	3.42	104,604	3.50	803	0.03	207,461	6.95
2017-7	94,799	3.17	97,535	3.27	803	0.03	193,137	6.47
2017-8	102,445	3.43	102,524	3.43	754	0.03	205,723	6.89
2017-9	93,673	3.14	94,531	3.17	780	0.03	188,984	6.33
2017-10	96,449	3.23	96,108	3.22	757	0.03	193,314	6.47
2017-11	93,395	3.13	94,015	3.15	704	0.02	188,114	6.30
2017-12	90,919	3.04	94,873	3.18	812	0.03	186,604	6.25
2018-1	70,512	2.33	100,086	3.30	635	0.02	171,233	5.65
2018-2	60,638	2.00	92,708	3.06	546	0.02	153,892	5.08
2018-3	65,592	2.16	102,328	3.38	625	0.02	168,545	5.56
2018-4	61,778	2.04	96,162	3.17	545	0.02	158,485	5.23
2018-5	63,639	2.10	100,249	3.31	573	0.02	164,461	5.42
2018-6	59,950	1.98	95,278	3.14	543	0.02	155,771	5.14
2018-7	60,656	2.00	93,913	3.10	495	0.02	155,064	5.11
2018-8	64,839	2.14	96,724	3.19	521	0.02	162,084	5.35
2018-9	58,423	1.93	88,452	2.92	448	0.01	147,323	4.86
2018-10	64,089	2.11	95,195	3.14	478	0.02	159,762	5.27
2018-11	60,949	2.01	91,697	3.02	449	0.01	153,095	5.05
2018-12	60,243	1.99	88,969	2.93	466	0.02	149,678	4.94
2019-1	64,834	2.11	91,196	2.97	355	0.01	156,385	5.09
2019-2	58,530	1.90	82,785	2.69	278	0.01	141,593	4.61
2019-3	62,325	2.03	89,116	2.90	314	0.01	151,755	4.94
2019-4	60,307	1.96	85,938	2.80	325	0.01	146,570	4.77
2019-5	62,261	2.03	88,930	2.89	333	0.01	151,524	4.93
2019-6	56,441	1.84	82,316	2.68	296	0.01	139,053	4.52
2019-7	58,445	1.90	87,520	2.85	283	0.01	146,248	4.76
2019-8	55,909	1.82	85,918	2.80	308	0.01	142,135	4.62
2019-9	51,265	1.67	80,717	2.63	284	0.01	132,266	4.30
2019-10	56,696	1.84	85,907	2.80	291	0.01	142,894	4.65
2019-11	51,924	1.69	79,509	2.59	275	0.01	131,708	4.29
2019-12	54,404	1.77	83,570	2.72	277	0.01	138,251	4.50
2020-1	56,829	1.81	83,924	2.67	259	0.01	141,012	4.49
2020-2	51,280	1.63	77,821	2.48	251	0.01	129,352	4.12
2020-3	51,082	1.63	83,436	2.66	276	0.01	134,794	4.30
2020-4	45,649	1.45	81,599	2.60	242	0.01	127,490	4.06
2020-5	54,017	1.72	80,302	2.56	263	0.01	134,582	4.29
% Change	-48%	-50%	-23%	-26%	-68%	-70%	-35%	-38%

Opioid Prescription Counts and Rates per 100 Population For Less Than and Greater Than 30 Days and 90 Days by Month, January 2017 - May 2020



Note: Annual population estimates were used for the denominator each month because monthly populations are not available. Therefore this representation is not comparable to annual prescription rates per 100 population.

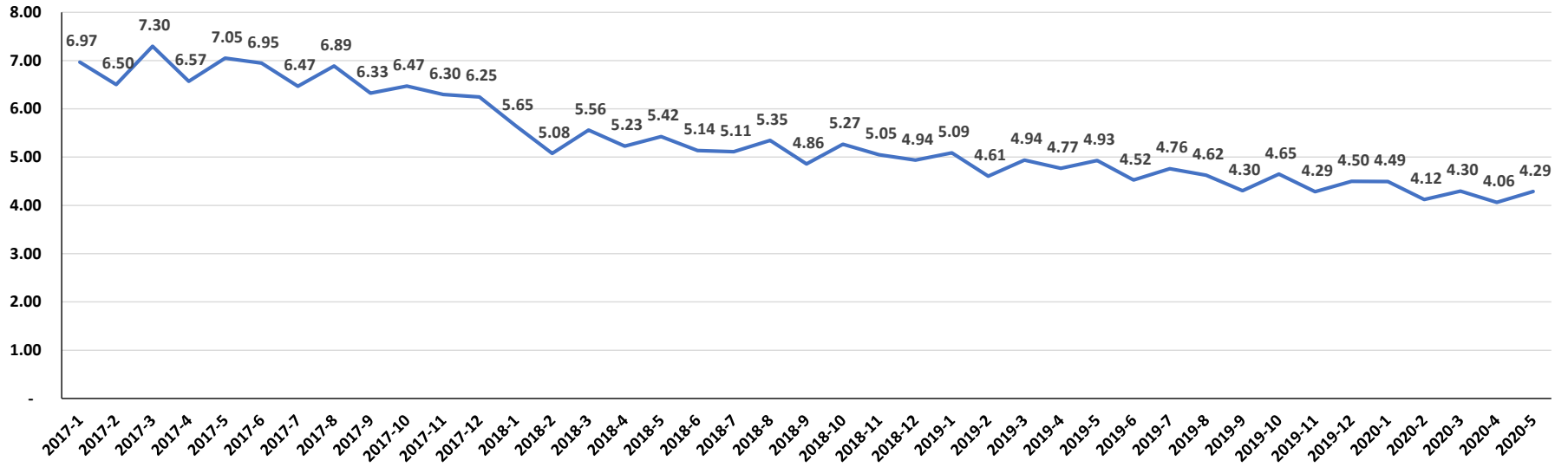
Opioid Prescription Counts by Month and Resident County, January 2017 - May 2020

	Carson City	Churchill	Clark	Douglas	Elko	Esmeralda	Eureka	Humboldt	Lander	Lincoln	Lyon	Mineral	Nye	Pershing	Storey	Washoe	White Pine	Total
2017-1	4,754	2,228	147,457	4,137	3,108	56	161	1,053	414	392	5,546	499	5,654	391	470	31,061	770	208,151
2017-2	4,335	2,034	138,288	3,708	2,799	45	142	984	391	339	5,202	431	5,235	380	463	28,758	745	194,279
2017-3	4,771	2,345	154,884	4,276	3,263	62	144	1,082	476	409	5,917	497	5,865	420	498	32,227	802	217,938
2017-4	4,356	2,053	139,278	3,823	2,845	49	144	990	418	367	5,343	507	5,361	359	443	29,167	791	196,294
2017-5	4,736	2,294	149,327	4,024	3,124	50	150	959	410	481	5,602	466	5,629	427	502	31,561	859	210,601
2017-6	4,474	2,208	147,479	4,015	2,937	53	164	994	436	434	5,454	561	5,533	409	478	30,995	837	207,461
2017-7	4,229	2,139	137,272	3,664	3,023	56	135	935	431	370	5,285	471	5,113	346	424	28,438	806	193,137
2017-8	4,765	2,315	145,523	4,078	3,108	50	145	1,000	418	384	5,589	534	5,438	445	474	30,638	819	205,723
2017-9	4,374	2,150	133,169	3,786	2,931	48	142	924	401	391	5,295	523	5,090	375	458	28,167	760	188,984
2017-10	4,424	2,153	135,900	3,858	3,003	37	128	963	396	396	5,326	529	5,283	392	440	29,312	774	193,314
2017-11	4,237	1,954	131,786	3,615	2,949	37	127	951	403	378	5,133	503	5,027	383	453	29,426	752	188,114
2017-12	4,228	2,019	131,379	3,716	2,699	34	112	903	344	359	5,046	506	4,937	373	463	28,776	710	186,604
2018-1	3,944	1,768	120,712	3,487	2,233	36	101	723	317	381	4,660	420	4,804	338	408	26,214	687	171,233
2018-2	3,514	1,585	108,676	3,092	1,963	39	93	692	289	319	4,157	367	4,446	300	352	23,531	477	153,892
2018-3	3,828	1,777	118,521	3,387	2,186	39	110	734	294	346	4,630	405	4,782	340	440	26,076	650	168,545
2018-4	3,625	1,637	111,501	3,138	2,124	38	107	663	277	335	4,387	341	4,555	314	360	24,452	631	158,485
2018-5	3,753	1,816	115,739	3,392	2,240	33	107	722	301	347	4,707	364	4,733	337	405	24,812	653	164,461
2018-6	3,611	1,637	110,182	3,239	2,098	39	97	682	282	338	4,370	369	4,423	317	379	23,040	668	155,771
2018-7	3,612	1,639	109,718	3,204	2,164	39	95	624	320	355	4,393	344	4,455	282	397	22,816	607	155,064
2018-8	3,800	1,803	114,793	3,337	2,275	38	108	705	310	350	4,577	383	4,663	337	401	23,583	621	162,084
2018-9	3,459	1,529	104,551	3,101	2,032	31	91	558	286	298	4,194	314	4,185	275	373	21,484	562	147,323
2018-10	3,625	1,743	113,186	3,328	2,198	31	109	642	294	338	4,417	394	4,683	345	357	23,439	633	159,762
2018-11	3,510	1,623	108,527	3,150	2,148	33	77	602	274	307	4,341	370	4,479	324	319	22,423	588	153,095
2018-12	3,489	1,529	105,534	3,145	2,162	30	86	594	267	327	4,220	373	4,380	289	307	22,353	593	149,678
2019-1	3,674	1,670	110,846	3,151	2,229	29	109	629	285	336	4,368	424	4,531	326	305	22,892	581	156,385
2019-2	3,246	1,465	100,802	2,926	2,041	23	94	515	237	274	3,855	353	4,127	272	275	20,563	525	141,593
2019-3	3,551	1,406	107,908	3,132	2,009	29	90	540	374	310	4,326	412	4,476	253	269	22,110	560	151,755
2019-4	3,418	1,315	104,335	3,032	2,084	36	101	553	278	337	4,072	359	4,378	282	268	21,156	566	146,570
2019-5	3,445	1,433	107,970	2,997	2,074	35	100	600	279	352	4,227	377	4,576	292	290	21,896	581	151,524
2019-6	3,569	1,275	98,436	2,879	1,895	33	85	575	257	284	3,875	346	4,231	254	260	20,313	486	139,053
2019-7	3,860	1,391	103,149	3,041	2,033	37	99	576	262	348	4,120	379	4,496	271	286	21,413	487	146,248
2019-8	3,728	1,335	100,233	2,993	2,013	24	86	550	257	315	3,871	400	4,332	260	263	20,942	533	142,135
2019-9	3,470	1,159	93,468	2,778	1,850	35	78	554	236	212	3,754	329	4,060	256	244	19,279	504	132,266
2019-10	3,643	1,267	100,871	3,008	2,008	31	77	615	242	296	3,919	382	4,353	261	287	21,086	548	142,894
2019-11	3,396	1,218	93,042	2,811	1,877	19	67	559	214	278	3,680	344	4,014	243	272	19,170	504	131,708
2019-12	3,603	1,221	97,759	2,840	1,985	22	90	586	247	267	3,819	374	4,274	266	259	20,120	519	138,251
2020-1	3,546	1,228	100,059	2,901	2,003	27	78	576	245	295	3,895	375	4,383	230	263	20,329	579	141,012
2020-2	3,375	1,183	91,803	2,656	1,781	29	96	473	212	246	3,639	329	4,059	230	242	18,519	480	129,352
2020-3	3,450	1,202	96,367	2,681	1,855	22	83	508	240	257	3,834	371	4,355	235	240	18,601	493	134,794
2020-4	3,164	1,120	91,469	2,385	1,764	17	80	474	201	272	3,586	371	4,108	226	237	17,557	459	127,490
2020-5	3,390	1,252	95,602	2,553	1,739	20	82	508	196	275	3,860	349	4,180	212	246	19,629	489	134,582
% Change	-29%	-44%	-35%	-38%	-44%	-64%	-49%	-52%	-53%	-30%	-30%	-30%	-26%	-46%	-48%	-37%	-36%	-35%

Opioid Prescription Rates per 100 Population by Month and Resident County, January 2017 - May 2020

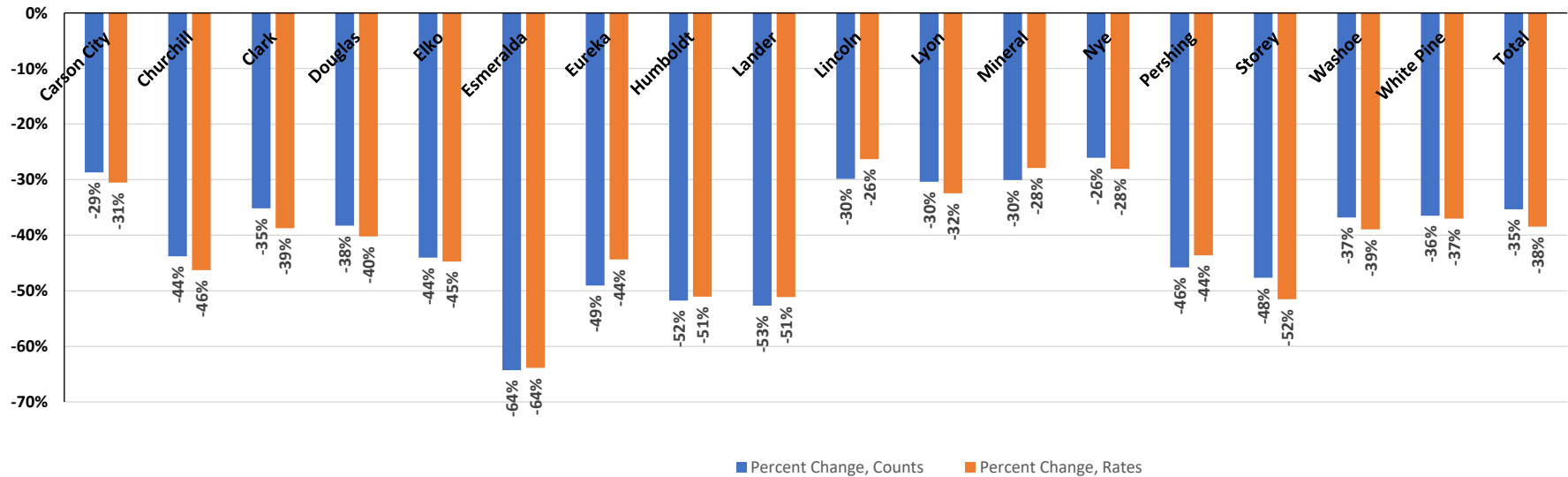
	Carson City	Churchill	Clark	Douglas	Elko	Esmeralda	Eureka	Humboldt	Lander	Lincoln	Lyon	Mineral	Nye	Pershing	Storey	Washoe	White Pine	Total
2017-1	8.58	8.78	6.72	8.57	5.83	5.77	8.33	6.20	6.68	7.58	10.15	10.68	12.19	5.80	11.51	6.87	7.19	6.97
2017-2	7.82	8.01	6.30	7.68	5.25	4.64	7.35	5.80	6.31	6.56	9.52	9.22	11.28	5.64	11.34	6.36	6.96	6.50
2017-3	8.61	9.24	7.06	8.85	6.12	6.39	7.45	6.37	7.68	7.91	10.83	10.63	12.64	6.23	12.19	7.13	7.49	7.30
2017-4	7.86	8.09	6.35	7.92	5.34	5.05	7.45	5.83	6.74	7.10	9.78	10.85	11.56	5.32	10.85	6.45	7.39	6.57
2017-5	8.54	9.04	6.81	8.33	5.86	5.15	7.76	5.65	6.61	9.30	10.25	9.97	12.13	6.33	12.29	6.98	8.02	7.05
2017-6	8.07	8.70	6.72	8.31	5.51	5.46	8.49	5.85	7.03	8.39	9.98	12.00	11.93	6.07	11.70	6.86	7.82	6.95
2017-7	7.63	8.43	6.26	7.59	5.67	5.77	6.99	5.51	6.95	7.16	9.67	10.08	11.02	5.13	10.38	6.29	7.53	6.47
2017-8	8.60	9.12	6.63	8.44	5.83	5.15	7.51	5.89	6.74	7.43	10.23	11.42	11.72	6.60	11.61	6.78	7.65	6.89
2017-9	7.89	8.47	6.07	7.84	5.50	4.95	7.35	5.44	6.47	7.56	9.69	11.19	10.97	5.56	11.21	6.23	7.10	6.33
2017-10	7.98	8.48	6.19	7.99	5.64	3.81	6.63	5.67	6.39	7.66	9.74	11.32	11.39	5.81	10.77	6.49	7.23	6.47
2017-11	7.64	7.70	6.01	7.48	5.53	3.81	6.57	5.60	6.50	7.31	9.39	10.76	10.84	5.68	11.09	6.51	7.02	6.30
2017-12	7.63	7.95	5.99	7.69	5.07	3.51	5.80	5.32	5.55	6.94	9.23	10.83	10.64	5.53	11.34	6.37	6.63	6.25
2018-1	7.05	6.85	5.41	7.13	4.16	3.72	5.48	4.28	5.18	7.50	8.41	9.11	10.24	5.08	9.89	5.75	6.39	5.65
2018-2	6.28	6.14	4.87	6.32	3.66	4.03	5.04	4.09	4.72	6.28	7.50	7.96	9.48	4.51	8.53	5.16	4.43	5.08
2018-3	6.84	6.88	5.31	6.92	4.07	4.03	5.97	4.34	4.80	6.81	8.35	8.78	10.20	5.11	10.66	5.72	6.04	5.56
2018-4	6.48	6.34	5.00	6.42	3.96	3.93	5.80	3.92	4.53	6.60	7.92	7.39	9.71	4.72	8.73	5.36	5.87	5.23
2018-5	6.71	7.03	5.19	6.93	4.18	3.41	5.80	4.27	4.92	6.83	8.49	7.89	10.09	5.06	9.82	5.44	6.07	5.42
2018-6	6.45	6.34	4.94	6.62	3.91	4.03	5.26	4.04	4.61	6.66	7.88	8.00	9.43	4.76	9.19	5.05	6.21	5.14
2018-7	6.46	6.35	4.92	6.55	4.03	4.03	5.15	3.69	5.23	6.99	7.93	7.46	9.50	4.24	9.62	5.00	5.64	5.11
2018-8	6.79	6.98	5.14	6.82	4.24	3.93	5.86	4.17	5.07	6.89	8.26	8.30	9.94	5.06	9.72	5.17	5.77	5.35
2018-9	6.18	5.92	4.68	6.34	3.79	3.20	4.93	3.30	4.67	5.87	7.57	6.81	8.92	4.13	9.04	4.71	5.22	4.86
2018-10	6.48	6.75	5.07	6.80	4.10	3.20	5.91	3.80	4.80	6.66	7.97	8.54	9.99	5.18	8.65	5.14	5.89	5.27
2018-11	6.27	6.29	4.86	6.44	4.00	3.41	4.18	3.56	4.48	6.05	7.83	8.02	9.55	4.87	7.73	4.92	5.47	5.05
2018-12	6.24	5.92	4.73	6.43	4.03	3.10	4.66	3.52	4.36	6.44	7.61	8.09	9.34	4.34	7.44	4.90	5.51	4.94
2019-1	6.51	6.36	4.89	6.37	4.13	3.01	6.20	3.74	4.71	6.73	7.79	9.28	9.57	4.96	7.27	4.97	5.39	5.09
2019-2	5.75	5.58	4.45	5.92	3.79	2.39	5.35	3.06	3.92	5.48	6.88	7.73	8.71	4.14	6.55	4.47	4.87	4.61
2019-3	6.29	5.35	4.76	6.33	3.73	3.01	5.12	3.21	6.18	6.20	7.72	9.02	9.45	3.85	6.41	4.80	5.19	4.94
2019-4	6.06	5.01	4.60	6.13	3.87	3.73	5.75	3.29	4.59	6.75	7.26	7.86	9.24	4.29	6.39	4.60	5.25	4.77
2019-5	6.10	5.46	4.76	6.06	3.85	3.63	5.69	3.56	4.61	7.05	7.54	8.25	9.66	4.44	6.91	4.76	5.39	4.93
2019-6	6.32	4.86	4.34	5.82	3.51	3.42	4.84	3.42	4.25	5.68	6.91	7.57	8.93	3.86	6.20	4.41	4.51	4.52
2019-7	6.84	5.30	4.55	6.15	3.77	3.84	5.63	3.42	4.33	6.97	7.35	8.30	9.49	4.12	6.82	4.65	4.52	4.76
2019-8	6.61	5.08	4.42	6.05	3.73	2.49	4.89	3.27	4.25	6.31	6.91	8.75	9.15	3.95	6.27	4.55	4.94	4.62
2019-9	6.15	4.41	4.12	5.62	3.43	3.63	4.44	3.29	3.90	4.24	6.70	7.20	8.57	3.89	5.82	4.19	4.67	4.30
2019-10	6.45	4.83	4.45	6.08	3.72	3.22	4.38	3.65	4.00	5.92	6.99	8.36	9.19	3.97	6.84	4.58	5.08	4.65
2019-11	6.02	4.64	4.10	5.68	3.48	1.97	3.81	3.32	3.54	5.56	6.57	7.53	8.48	3.70	6.48	4.16	4.67	4.29
2019-12	6.38	4.65	4.31	5.74	3.68	2.28	5.12	3.48	4.08	5.34	6.81	8.19	9.02	4.05	6.17	4.37	4.81	4.50
2020-1	6.23	4.63	4.31	5.82	3.71	2.82	4.41	3.44	4.08	5.99	6.92	8.27	9.19	3.55	5.97	4.35	5.36	4.49
2020-2	5.93	4.46	3.95	5.33	3.30	3.02	5.43	2.83	3.53	5.00	6.46	7.26	8.51	3.55	5.49	3.96	4.45	4.12
2020-3	6.06	4.53	4.15	5.38	3.44	2.29	4.69	3.03	4.00	5.22	6.81	8.18	9.13	3.62	5.44	3.98	4.57	4.30
2020-4	5.56	4.22	3.94	4.78	3.27	1.77	4.52	2.83	3.35	5.53	6.37	8.18	8.62	3.49	5.38	3.75	4.25	4.06
2020-5	5.96	4.72	4.12	5.12	3.22	2.09	4.64	3.03	3.26	5.59	6.85	7.70	8.77	3.27	5.58	4.20	4.53	4.29
% Change	-31%	-46%	-39%	-40%	-45%	-64%	-44%	-51%	-51%	-26%	-32%	-28%	-28%	-44%	-52%	-39%	-37%	-38%

Nevada Opioid Prescription Rate per 100 Population, by Month, January 2017 - May 2020



Note: Annual population estimates were used for the denominator each month because monthly populations are not available. Therefore this representation is not comparable to annual prescription rates per 100 population

Overall Percent Change (from January 2017 to May 2020) in Opioid Prescription Rates per 100 Population, by Resident County



Number of Opioid Prescriptions and Patients with Less Than 50 MMEs per Month, by Month and Resident County, January 2017 - May 2020

Carson City - Lander Counties																		
	Carson City		Churchill		Clark		Douglas		Elko		Esmeralda		Eureka		Humboldt		Lander	
	Prescriptions	Patients	Prescriptions	Patients	Prescriptions	Patients	Prescriptions	Patients	Prescriptions	Patients	Prescriptions	Patients	Prescriptions	Patients	Prescriptions	Patients	Prescriptions	Patients
2017-1	3,266	2,725	1,554	1,255	99,322	85,182	2,728	2,302	2,319	1,932	38	33	90	72	759	619	332	260
2017-2	2,939	2,554	1,394	1,160	93,434	81,415	2,491	2,130	2,049	1,769	31	28	75	63	686	594	309	251
2017-3	3,271	2,752	1,611	1,282	104,556	88,362	2,845	2,373	2,426	2,012	45	38	83	65	779	619	373	295
2017-4	2,966	2,548	1,417	1,192	94,317	82,183	2,524	2,139	2,119	1,822	34	29	73	65	717	616	340	270
2017-5	3,271	2,721	1,558	1,272	101,413	85,891	2,692	2,272	2,324	1,945	37	35	81	66	665	572	325	248
2017-6	3,087	2,594	1,480	1,193	100,061	84,960	2,692	2,268	2,217	1,900	36	32	92	81	706	603	334	255
2017-7	2,984	2,525	1,440	1,177	93,391	80,280	2,486	2,115	2,291	1,894	40	38	81	68	663	558	339	279
2017-8	3,292	2,652	1,545	1,195	99,340	83,985	2,772	2,294	2,344	1,913	35	28	87	74	713	597	317	238
2017-9	3,042	2,526	1,460	1,191	91,752	79,157	2,573	2,179	2,198	1,836	29	28	89	70	677	566	313	254
2017-10	3,068	2,549	1,441	1,198	93,591	80,435	2,641	2,221	2,252	1,821	26	24	82	71	700	577	310	234
2017-11	2,971	2,509	1,324	1,063	90,277	77,817	2,431	2,064	2,268	1,863	27	26	78	65	703	583	316	255
2017-12	2,996	2,510	1,361	1,104	89,964	77,428	2,562	2,166	2,032	1,707	24	23	70	61	632	529	265	212
2018-1	2,855	2,452	1,300	1,079	85,045	73,654	2,529	2,133	1,766	1,455	29	27	69	60	552	480	249	194
2018-2	2,575	2,225	1,175	993	77,044	68,297	2,280	1,954	1,519	1,307	32	27	63	53	537	482	235	186
2018-3	2,796	2,337	1,344	1,106	84,623	72,853	2,492	2,113	1,714	1,457	28	23	82	71	578	494	228	188
2018-4	2,687	2,293	1,239	1,051	79,942	70,300	2,317	1,994	1,681	1,409	28	24	71	58	517	462	212	177
2018-5	2,772	2,366	1,387	1,154	82,710	71,049	2,535	2,136	1,808	1,500	26	21	76	62	545	476	234	191
2018-6	2,740	2,344	1,251	1,067	79,374	69,416	2,457	2,106	1,676	1,408	33	29	70	60	527	472	225	184
2018-7	2,723	2,285	1,263	1,055	78,987	68,611	2,416	2,030	1,737	1,450	28	25	70	60	493	440	255	201
2018-8	2,916	2,437	1,421	1,157	83,378	71,060	2,546	2,128	1,861	1,540	33	29	81	69	544	452	258	204
2018-9	2,615	2,255	1,213	1,029	75,941	66,307	2,367	2,013	1,624	1,373	25	21	68	61	453	385	218	179
2018-10	2,755	2,334	1,385	1,119	82,597	70,642	2,580	2,151	1,769	1,490	26	22	91	81	510	433	228	182
2018-11	2,666	2,278	1,271	1,067	79,129	68,318	2,427	2,060	1,729	1,458	28	23	60	55	476	405	221	186
2018-12	2,637	2,248	1,183	1,004	76,809	66,818	2,415	2,054	1,735	1,465	24	23	65	61	447	402	212	180
2019-1	2,814	2,365	1,316	1,076	80,682	68,858	2,446	2,044	1,818	1,504	20	18	82	76	484	411	235	189
2019-2	2,477	2,112	1,154	975	73,507	64,180	2,297	1,949	1,678	1,420	18	15	71	64	409	358	198	171
2019-3	2,672	2,219	1,129	943	78,905	67,718	2,424	2,046	1,667	1,431	22	20	74	61	434	370	310	190
2019-4	2,638	2,244	1,071	914	76,545	66,134	2,368	2,037	1,701	1,415	28	20	83	69	448	396	217	173
2019-5	2,653	2,215	1,167	983	79,256	67,538	2,339	1,972	1,724	1,423	27	22	85	75	491	412	224	170
2019-6	2,739	2,314	1,050	897	72,652	64,270	2,252	1,946	1,572	1,339	26	23	67	62	457	391	211	175
2019-7	2,977	2,405	1,156	957	75,690	65,594	2,378	2,023	1,667	1,394	27	24	78	64	461	391	224	176
2019-8	2,876	2,338	1,085	893	73,595	64,142	2,358	1,966	1,676	1,419	18	14	69	60	442	382	216	180
2019-9	2,687	2,236	957	809	68,697	61,210	2,169	1,857	1,526	1,292	29	23	59	54	446	387	199	162
2019-10	2,811	2,272	1,053	881	74,316	64,284	2,381	2,024	1,687	1,396	24	21	64	56	496	402	207	161
2019-11	2,632	2,209	1,015	876	68,271	60,653	2,219	1,926	1,547	1,336	14	12	54	49	456	397	182	152
2019-12	2,781	2,241	1,013	866	71,904	62,985	2,243	1,913	1,651	1,383	17	14	73	65	473	403	203	164
2020-1	2,777	2,259	1,007	833	73,850	64,252	2,260	1,909	1,672	1,390	22	21	62	55	472	390	200	165
2020-2	2,656	2,201	982	834	67,886	60,588	2,108	1,802	1,492	1,286	23	20	78	68	399	347	181	149
2020-3	2,695	2,173	991	838	70,776	61,746	2,123	1,789	1,525	1,298	16	14	66	59	417	351	202	165
2020-4	2,435	1,991	906	736	66,305	57,690	1,866	1,580	1,473	1,219	12	10	62	54	385	319	163	137
2020-5	2,656	2,196	1,028	830	70,528	61,546	2,000	1,722	1,445	1,236	15	13	62	55	419	346	164	141
% Change	-19%	-19%	-34%	-34%	-29%	-28%	-27%	-25%	-38%	-36%	-61%	-61%	-31%	-24%	-45%	-44%	-51%	-46%

Number of Opioid Prescriptions and Patients with Less Than 50 MMEs per Month, by Month and Resident County, January 2017 - May 2020

Lincoln - White Pine Counties

	Lincoln		Lyon		Mineral		Nye		Pershing		Storey		Washoe		White Pine	
	Prescriptions	Patients	Prescriptions	Patients	Prescriptions	Patients	Prescriptions	Patients	Prescriptions	Patients	Prescriptions	Patients	Prescriptions	Patients	Prescriptions	Patients
2017-1	263	226	3709	3114	328	276	3750	3229	286	228	311	259	21152	17539	527	425
2017-2	234	214	3458	2991	284	246	3468	3047	285	227	309	257	19505	16521	485	402
2017-3	294	241	3968	3262	325	270	3927	3310	314	241	328	275	21872	17780	520	407
2017-4	246	217	3609	3095	347	297	3591	3115	272	217	294	250	19838	16792	522	421
2017-5	330	244	3784	3172	326	277	3784	3225	332	263	338	274	21500	17521	581	454
2017-6	294	232	3694	3092	379	303	3703	3177	309	245	314	262	21181	17439	558	422
2017-7	240	211	3594	3043	316	269	3442	2993	259	212	285	233	19469	16325	559	432
2017-8	262	219	3786	3148	356	292	3671	3133	320	246	311	264	21260	17401	550	414
2017-9	264	232	3593	3072	353	292	3470	3006	283	225	319	271	19565	16463	504	398
2017-10	270	235	3690	3132	358	285	3622	3112	295	235	311	261	20790	16774	541	427
2017-11	263	223	3522	2998	326	276	3468	2970	286	234	318	265	21075	16332	501	394
2017-12	250	223	3485	2964	350	290	3380	2913	274	231	315	264	20593	16057	483	399
2018-1	269	217	3333	2837	310	267	3361	2904	270	217	297	247	19746	15402	495	401
2018-2	238	215	3021	2639	265	229	3131	2746	235	200	250	211	17665	14259	347	290
2018-3	251	221	3367	2884	298	247	3383	2884	268	227	307	259	19797	15569	487	392
2018-4	245	211	3232	2818	259	227	3329	2884	248	215	252	225	18610	14727	460	376
2018-5	251	209	3461	2906	271	223	3464	2942	265	214	283	245	18793	15222	462	379
2018-6	254	228	3245	2795	273	233	3273	2800	261	210	279	244	17434	14783	479	392
2018-7	266	222	3276	2775	259	230	3259	2792	232	197	275	235	17381	14732	443	370
2018-8	255	228	3431	2918	282	239	3457	2909	279	235	282	234	18148	15095	465	389
2018-9	216	196	3148	2739	230	200	3096	2690	232	200	272	241	16526	14185	415	354
2018-10	246	214	3328	2811	295	234	3503	2925	287	236	249	213	18043	15093	468	379
2018-11	226	202	3269	2790	276	233	3321	2830	262	212	225	195	17331	14601	435	360
2018-12	236	202	3194	2738	282	242	3227	2745	234	195	216	189	17203	14519	430	366
2019-1	247	209	3318	2802	315	240	3405	2858	266	222	224	193	17777	14656	426	351
2019-2	203	179	2935	2526	266	224	3122	2697	216	187	201	175	16069	13641	381	335
2019-3	223	207	3320	2825	310	248	3375	2887	213	184	195	170	17267	14542	402	348
2019-4	246	215	3145	2700	268	221	3307	2839	229	190	194	172	16705	14210	412	356
2019-5	250	208	3303	2777	286	226	3465	2912	235	203	220	181	17304	14431	432	364
2019-6	211	187	3051	2657	267	217	3195	2775	206	180	194	160	16141	13841	363	318
2019-7	248	209	3239	2740	278	226	3405	2881	217	183	217	178	16978	14165	356	287
2019-8	230	194	3012	2572	303	233	3298	2776	209	180	208	177	16829	14059	402	329
2019-9	144	135	2957	2540	241	197	3086	2682	201	173	187	163	15360	13203	380	328
2019-10	209	183	3141	2661	285	225	3276	2800	209	186	227	184	16855	14159	410	350
2019-11	204	185	2920	2496	257	218	3001	2633	200	182	218	185	15240	13109	374	319
2019-12	183	158	3017	2583	273	228	3175	2740	218	181	211	175	16060	13467	396	330
2020-1	209	179	3077	2628	281	227	3314	2862	188	164	213	185	16336	13732	450	355
2020-2	177	160	2886	2487	252	206	3095	2738	194	174	194	165	14888	12806	371	319
2020-3	182	160	2991	2539	287	232	3308	2820	194	171	187	160	14864	12655	381	314
2020-4	195	171	2804	2341	282	210	3077	2697	183	162	185	150	13669	11193	359	295
2020-5	199	173	3004	2504	272	220	3147	2732	178	157	192	169	15456	12517	395	334
% Change	-24%	-23%	-19%	-20%	-17%	-20%	-16%	-15%	-38%	-31%	-38%	-35%	-27%	-29%	-25%	-21%

Number of Opioid Prescriptions and Patients with more than 50 and Less Than 90 MMEs per Month, by Month and Resident County, January 2017 - May 2020

Carson City - Lander Counties

	Carson City		Churchill		Clark		Douglas		Elko		Esmeralda		Eureka		Humboldt		Lander	
	Prescriptions	Patients	Prescriptions	Patients	Prescriptions	Patients	Prescriptions	Patients	Prescriptions	Patients	Prescriptions	Patients	Prescriptions	Patients	Prescriptions	Patients	Prescriptions	Patients
2017-1	814	706	449	392	26058	23094	788	696	533	477	10	9	42	37	173	143	64	58
2017-2	771	702	415	378	24296	21913	677	620	503	463	7	7	42	35	170	145	55	51
2017-3	829	720	500	424	27447	23660	805	706	559	488	9	8	40	37	169	147	76	63
2017-4	756	671	432	381	24746	22150	743	679	501	458	7	6	45	41	144	126	49	45
2017-5	771	669	494	415	26385	22913	737	663	545	477	4	4	45	41	170	151	51	45
2017-6	727	646	503	427	26215	22667	761	674	479	428	9	9	50	49	178	148	67	57
2017-7	671	610	480	406	24245	21311	664	597	485	427	9	9	35	34	164	146	62	54
2017-8	827	673	520	428	25698	22227	761	651	502	441	7	5	44	40	165	144	64	54
2017-9	741	637	487	418	23293	20791	712	633	480	431	14	11	37	36	141	120	64	55
2017-10	744	641	511	429	23830	21141	716	617	497	443	7	6	29	26	152	128	62	52
2017-11	694	616	443	371	23219	20536	666	595	449	405	7	7	36	32	144	121	59	51
2017-12	666	589	462	402	23174	20403	657	584	443	393	6	6	31	27	158	140	48	40
2018-1	569	489	314	278	19259	17021	546	489	298	253	5	5	23	20	101	94	40	33
2018-2	507	468	291	262	17201	15591	473	431	299	260	4	4	24	24	93	83	34	33
2018-3	576	497	305	275	18374	16033	544	482	316	268	6	6	20	18	89	79	45	39
2018-4	514	467	292	261	16984	15299	485	444	305	258	5	5	26	23	85	78	47	39
2018-5	551	465	305	273	17759	15440	508	455	294	247	3	3	25	23	104	95	42	35
2018-6	466	428	275	251	16727	14980	451	420	298	256	4	4	24	22	94	81	34	31
2018-7	501	448	258	229	16477	14624	458	403	294	238	8	6	21	21	71	66	44	38
2018-8	485	425	246	211	16896	14581	487	422	273	238	2	2	22	19	91	72	34	33
2018-9	455	405	216	201	15490	13930	447	419	275	244	4	4	15	15	58	53	46	38
2018-10	481	431	259	230	16700	14477	440	401	299	256	5	5	14	13	66	59	38	36
2018-11	457	417	253	215	16145	14259	441	400	279	236	4	4	15	12	73	64	33	31
2018-12	471	419	252	224	15916	14146	452	412	274	235	5	5	19	19	91	77	37	33
2019-1	485	421	248	213	16704	14521	442	371	263	213	7	5	23	20	84	69	29	28
2019-2	449	407	216	195	15153	13644	403	370	230	207	2	2	18	18	61	51	24	24
2019-3	496	430	172	147	16157	14089	450	384	211	186	5	4	13	13	56	48	36	24
2019-4	436	391	156	144	15364	13700	418	364	255	215	8	6	14	13	60	52	29	28
2019-5	452	395	176	154	15975	13840	409	355	217	191	6	6	11	11	67	57	29	24
2019-6	486	427	149	138	14508	13202	390	350	197	189	5	5	17	16	72	63	24	22
2019-7	509	431	147	130	15397	13488	405	354	224	197	6	6	17	15	74	62	12	12
2019-8	506	426	160	145	14827	13198	396	350	216	190	3	3	16	12	64	57	20	17
2019-9	458	401	131	126	13939	12774	397	353	206	179	4	4	15	12	69	61	15	11
2019-10	481	425	137	126	14982	13184	398	351	202	175	5	4	10	10	70	58	17	16
2019-11	434	391	133	128	14073	12903	391	346	205	185	3	3	9	9	65	56	12	12
2019-12	480	400	140	127	14605	13084	370	324	216	189	2	2	12	12	69	63	19	15
2020-1	463	397	152	140	14842	13267	415	362	203	178	2	2	11	11	66	55	24	14
2020-2	439	388	145	137	13642	12600	356	324	175	161	3	3	12	11	48	44	15	10
2020-3	444	390	142	128	14647	13029	354	326	211	178	3	3	12	12	58	48	16	13
2020-4	451	382	139	109	14164	12683	320	291	184	153	2	2	12	12	55	48	17	14
2020-5	442	397	142	124	14119	12708	342	307	185	159	2	2	13	13	59	49	14	12
% Change	22955	20138	11647	10192	755632	669101	21075	18775	13080	11465	219	202	959	884	4041	3501	1547	1340

Number of Opioid Prescriptions and Patients with more than 50 and Less Than 90 MMEs per Month, by Month and Resident County, January 2017 - May 2020

Lincoln - White Pine Counties

	Lincoln		Lyon		Mineral		Nye		Pershing		Storey		Washoe		White Pine	
	Prescriptions	Patients	Prescriptions	Patients	Prescriptions	Patients	Prescriptions	Patients	Prescriptions	Patients	Prescriptions	Patients	Prescriptions	Patients	Prescriptions	Patients
2017-1	78	70	1046	931	103	90	1023	898	70	62	92	83	5878	5221	139	117
2017-2	54	50	1026	938	91	82	963	886	65	59	87	80	5487	4920	136	122
2017-3	71	63	1144	966	88	80	1032	909	81	65	97	87	6176	5319	151	131
2017-4	71	65	1019	908	86	81	975	879	59	56	82	77	5611	5010	157	133
2017-5	81	67	1080	934	80	76	1019	888	60	57	94	88	5991	5223	149	123
2017-6	76	67	1059	903	105	90	1029	901	69	60	97	90	5860	5143	154	122
2017-7	75	68	1018	895	84	76	904	803	63	55	84	77	5355	4764	132	112
2017-8	70	59	1093	935	96	86	973	837	83	68	102	91	5602	4905	136	109
2017-9	79	72	1051	921	99	87	901	787	57	50	82	75	5124	4575	120	101
2017-10	77	64	1014	890	88	82	920	797	59	53	80	70	5090	4520	131	113
2017-11	75	61	975	857	102	88	866	770	62	56	78	69	5084	4467	138	110
2017-12	71	61	950	828	82	78	893	778	67	60	85	77	4906	4371	125	101
2018-1	72	63	809	713	62	57	819	715	42	39	53	45	3810	3422	113	95
2018-2	56	50	685	623	56	54	739	679	40	35	51	47	3447	3154	78	73
2018-3	60	54	781	688	60	52	806	684	46	41	69	59	3688	3226	89	81
2018-4	64	55	723	655	46	45	703	647	47	42	57	55	3417	3070	100	83
2018-5	62	56	771	680	59	50	764	655	47	41	68	63	3465	3069	117	97
2018-6	57	51	702	630	58	50	684	625	32	30	54	49	3300	2995	109	93
2018-7	65	53	668	597	45	43	726	645	29	28	70	58	3190	2850	97	86
2018-8	64	56	707	609	59	53	717	626	33	30	66	57	3191	2813	91	82
2018-9	60	54	633	575	50	48	658	594	26	26	58	53	2995	2719	89	81
2018-10	62	55	694	604	61	53	731	641	37	33	50	45	3265	2877	92	78
2018-11	58	50	658	600	62	55	710	617	37	35	46	44	3138	2790	96	81
2018-12	59	51	660	595	54	53	709	622	35	34	42	38	3119	2793	100	81
2019-1	60	53	686	609	68	53	681	601	36	30	45	43	3138	2753	100	80
2019-2	44	37	605	554	52	46	616	570	37	32	38	37	2715	2460	86	76
2019-3	58	52	658	595	60	51	647	575	26	24	44	42	3018	2652	97	80
2019-4	66	55	616	553	58	55	632	571	33	30	45	42	2733	2444	96	83
2019-5	71	58	603	532	57	47	676	591	32	30	41	38	2876	2516	89	75
2019-6	49	47	551	507	51	47	612	556	31	28	44	38	2667	2423	70	64
2019-7	69	55	569	507	68	56	635	557	27	27	41	36	2755	2419	71	58
2019-8	59	52	574	513	66	53	608	547	30	26	34	32	2609	2327	76	71
2019-9	45	40	519	477	59	54	570	521	35	33	35	30	2472	2241	72	61
2019-10	58	48	494	453	63	52	620	555	29	27	41	36	2699	2364	82	71
2019-11	51	46	494	457	55	47	607	549	26	25	33	29	2492	2270	77	64
2019-12	62	53	528	485	64	53	640	578	25	25	28	26	2570	2293	77	62
2020-1	59	51	541	486	61	50	611	535	26	24	29	26	2531	2240	87	73
2020-2	49	46	494	455	52	46	558	511	20	20	26	24	2355	2136	66	59
2020-3	49	43	547	491	54	46	639	552	27	25	33	28	2365	2109	70	59
2020-4	57	44	523	459	58	43	600	529	24	19	31	27	2439	1992	65	57
2020-5	55	49	580	494	47	41	624	543	22	21	32	29	2663	2171	61	54
% Change	-29%	-30%	-45%	-47%	-54%	-54%	-39%	-40%	-69%	-66%	-65%	-65%	-55%	-58%	-56%	-54%

Number of Opioid Prescriptions and Patients with more than 90 MMEs per Month, by Month and Resident County, January 2017 - May 2020

Carson City - Lander Counties

	Carson City		Churchill		Clark		Douglas		Elko		Esmeralda		Eureka		Humboldt		Lander	
	Prescriptions	Patients	Prescriptions	Patients	Prescriptions	Patients	Prescriptions	Patients	Prescriptions	Patients	Prescriptions	Patients	Prescriptions	Patients	Prescriptions	Patients	Prescriptions	Patients
2017-1	674	526	225	181	22077	16748	621	498	256	213	8	7	29	25	121	92	18	15
2017-2	625	495	225	191	20558	16091	540	444	247	198	7	6	25	22	128	103	27	18
2017-3	671	521	234	191	22881	16852	626	480	278	215	8	6	21	18	134	94	27	22
2017-4	634	497	204	167	20215	15796	556	453	225	188	8	8	26	21	129	103	29	25
2017-5	694	516	242	185	21529	16164	595	477	255	203	9	7	24	16	124	93	34	25
2017-6	660	520	225	170	21203	15968	562	447	241	195	8	6	22	14	110	85	35	24
2017-7	574	463	219	172	19636	15250	514	424	247	199	7	6	19	14	108	84	30	22
2017-8	646	476	250	181	20485	15522	545	419	262	198	8	7	14	11	122	84	37	28
2017-9	591	452	203	157	18124	14332	501	411	253	209	5	5	16	14	106	81	24	19
2017-10	612	482	201	154	18479	14432	501	405	254	209	4	4	17	13	111	84	24	18
2017-11	572	459	187	152	18290	14246	518	416	232	189	3	3	13	10	104	81	28	23
2017-12	566	454	196	156	18241	14179	497	400	224	188	4	3	11	10	113	81	31	28
2018-1	520	405	154	122	16408	12823	412	328	169	136	2	2	9	7	70	54	28	22
2018-2	432	372	119	98	14431	11798	339	294	145	127	3	3	6	5	62	46	20	15
2018-3	456	374	128	99	15524	12055	351	292	156	125	5	5	8	6	67	54	21	15
2018-4	424	350	106	85	14575	11678	336	280	138	111	5	5	10	7	61	49	18	14
2018-5	430	346	124	102	15270	11696	349	293	138	111	4	4	6	5	73	51	25	17
2018-6	405	338	111	84	14081	11200	331	276	124	106	2	2	3	3	61	47	23	15
2018-7	388	316	118	97	14254	11135	330	271	133	108	3	3	4	4	60	43	21	17
2018-8	399	318	136	98	14519	11105	304	256	141	114	3	3	5	4	70	53	18	14
2018-9	389	327	100	76	13120	10492	287	250	133	104	2	2	8	5	47	40	22	16
2018-10	389	309	99	74	13889	10711	308	258	130	103	0	0	4	4	66	44	28	17
2018-11	387	313	99	75	13253	10363	282	239	140	109	1	1	2	2	53	39	20	15
2018-12	381	307	94	79	12809	10296	278	232	153	114	1	1	2	2	56	42	18	15
2019-1	375	299	106	82	13460	10369	263	218	148	111	2	2	4	4	61	40	21	16
2019-2	320	268	95	77	12142	9789	226	191	133	104	3	3	5	5	45	33	15	12
2019-3	383	300	105	75	12846	10078	258	198	131	100	2	2	3	2	50	38	28	16
2019-4	344	281	88	68	12426	9786	246	209	128	91	0	0	4	3	45	35	32	21
2019-5	340	266	90	73	12739	9891	249	195	133	96	2	2	4	4	42	33	26	19
2019-6	344	277	76	65	11276	9361	237	197	126	94	2	2	1	1	46	33	22	17
2019-7	374	277	88	65	12062	9586	258	212	142	108	4	4	4	3	41	32	26	19
2019-8	346	267	90	66	11811	9407	239	195	121	94	3	3	1	1	44	32	21	17
2019-9	325	253	71	56	10832	9020	212	182	118	96	2	2	4	2	39	31	22	15
2019-10	351	272	77	64	11573	9209	229	187	119	92	2	2	3	2	49	36	18	14
2019-11	330	265	70	57	10698	8877	201	175	125	98	2	2	4	4	38	30	20	16
2019-12	342	268	68	59	11250	9104	227	190	118	91	3	2	5	3	44	31	25	18
2020-1	306	237	69	56	11367	9153	226	186	128	96	3	3	5	3	38	27	21	15
2020-2	280	223	56	49	10275	8755	192	167	114	93	3	3	6	4	26	20	16	13
2020-3	311	242	69	61	10944	9000	204	174	119	95	3	3	5	3	33	25	22	15
2020-4	278	230	75	58	11000	8910	199	166	107	88	3	3	6	3	34	23	21	13
2020-5	292	234	82	65	10955	8935	211	187	109	94	3	3	7	5	30	19	18	13
% Change	-57%	-56%	-64%	-64%	-50%	-47%	-66%	-62%	-57%	-56%	-63%	-57%	-76%	-80%	-75%	-79%	0%	-13%

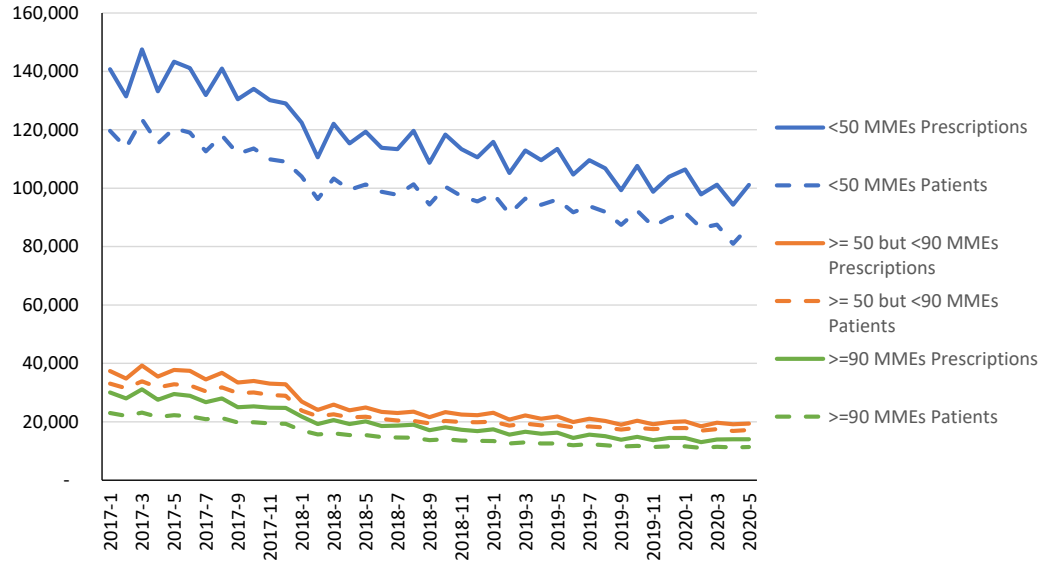
Number of Opioid Prescriptions and Patients with more than 90 MMEs per Month, by Month and Resident County, January 2017 - May 2020

Lincoln - White Pine Counties

	Lincoln		Lyon		Mineral		Nye		Pershing		Storey		Washoe		White Pine	
	Prescriptions	Patients	Prescriptions	Patients	Prescriptions	Patients	Prescriptions	Patients	Prescriptions	Patients	Prescriptions	Patients	Prescriptions	Patients	Prescriptions	Patients
2017-1	51	44	791	635	68	54	881	691	35	29	67	59	4031	3118	104	82
2017-2	51	45	718	596	56	48	804	646	30	25	67	59	3766	2962	124	94
2017-3	44	37	805	638	84	63	906	692	25	23	73	65	4179	3138	131	96
2017-4	50	43	715	575	74	61	795	640	28	23	67	56	3718	2937	112	89
2017-5	70	47	738	592	60	51	826	631	35	30	70	58	4070	3078	129	97
2017-6	64	44	701	557	77	63	801	621	31	25	67	55	3954	2977	125	91
2017-7	55	45	673	547	71	61	767	597	24	22	55	49	3614	2847	115	93
2017-8	52	45	710	558	82	62	794	609	42	31	61	51	3776	2898	133	95
2017-9	48	44	651	522	71	61	719	572	35	28	57	48	3478	2739	136	96
2017-10	49	41	622	505	83	63	741	577	38	31	49	45	3432	2681	102	80
2017-11	40	36	636	509	75	64	693	551	35	26	57	51	3267	2600	113	85
2017-12	38	34	611	496	74	57	664	525	32	25	63	53	3277	2571	102	81
2018-1	40	32	518	419	48	36	624	487	26	22	58	44	2658	2076	79	60
2018-2	25	21	451	384	46	36	576	473	25	21	51	42	2419	1943	52	42
2018-3	35	31	482	393	47	34	593	463	26	17	64	46	2591	1973	74	59
2018-4	26	24	432	367	36	27	523	423	19	16	51	43	2425	1903	71	55
2018-5	34	27	475	377	34	27	505	401	25	20	54	45	2554	1917	74	50
2018-6	27	25	423	348	38	29	466	374	24	19	46	36	2306	1802	80	54
2018-7	24	22	449	362	40	34	470	364	21	17	52	42	2245	1711	67	51
2018-8	31	26	439	347	42	28	489	370	25	15	53	42	2244	1687	65	51
2018-9	22	21	413	348	34	28	431	351	17	13	43	36	1963	1584	58	48
2018-10	30	23	395	320	38	27	449	348	21	16	58	43	2131	1651	73	56
2018-11	23	21	414	330	32	25	448	361	25	17	48	36	1954	1552	57	45
2018-12	32	26	366	289	37	29	444	345	20	17	49	33	2031	1582	63	48
2019-1	29	26	364	299	41	29	445	346	24	13	36	27	1977	1506	55	43
2019-2	27	26	315	275	35	25	389	324	19	16	36	30	1779	1380	58	45
2019-3	29	28	348	281	42	30	454	351	14	13	30	24	1825	1405	61	48
2019-4	25	23	311	263	33	28	439	343	20	17	29	20	1718	1318	58	43
2019-5	31	25	321	260	34	27	435	346	25	16	29	21	1716	1286	60	46
2019-6	24	23	273	234	28	24	424	346	17	14	22	20	1505	1218	53	43
2019-7	31	25	312	258	33	26	456	361	27	17	28	21	1680	1271	60	40
2019-8	26	23	285	247	31	25	426	338	21	14	21	19	1504	1202	55	42
2019-9	23	22	278	239	29	25	404	329	20	17	22	18	1447	1186	52	38
2019-10	29	26	284	241	34	25	457	357	23	16	19	17	1532	1181	56	43
2019-11	23	22	266	224	32	26	406	332	17	12	21	19	1438	1154	53	40
2019-12	22	20	274	232	37	29	459	354	23	15	20	16	1490	1170	46	34
2020-1	27	22	277	232	33	26	458	355	16	12	21	19	1462	1147	42	33
2020-2	20	19	259	229	25	21	406	331	16	12	22	20	1276	1064	43	35
2020-3	26	23	296	242	30	24	408	331	14	10	20	17	1372	1120	42	30
2020-4	20	18	259	224	31	24	431	338	19	12	21	17	1449	1093	35	29
2020-5	21	20	276	231	30	25	409	337	12	11	22	19	1510	1158	33	26
% Change	-59%	-55%	-65%	-64%	-56%	-54%	-54%	-51%	-66%	-62%	-67%	-68%	-63%	-63%	-68%	-68%

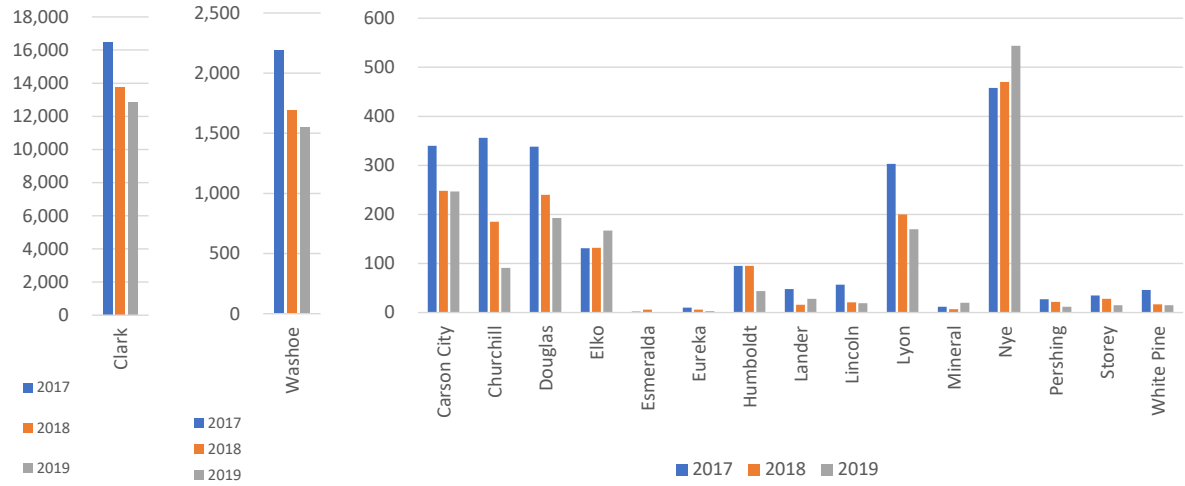
Nevada Opioid Prescriptions and Patients by MME per Month, by Month, January 2017 - May 2020

	<50 MMEs		≥ 50 but <90 MMEs		≥90 MMEs	
	Prescriptions	Patients	Prescriptions	Patients	Prescriptions	Patients
2017-1	140,734	119,676	37,360	33,084	30,057	23,017
2017-2	131,436	113,869	34,845	31,451	27,998	22,043
2017-3	147,537	123,584	39,274	33,873	31,127	23,151
2017-4	133,226	115,268	35,483	31,766	27,585	21,682
2017-5	143,341	120,452	37,756	32,834	29,504	22,270
2017-6	141,137	119,058	37,438	32,481	28,886	21,862
2017-7	131,879	112,652	34,530	30,444	26,728	20,895
2017-8	140,961	118,093	36,743	31,753	28,019	21,275
2017-9	130,484	111,766	33,482	29,800	25,018	19,790
2017-10	133,988	113,591	34,007	30,072	25,319	19,824
2017-11	130,154	109,937	33,097	29,212	24,863	19,501
2017-12	129,036	109,081	32,824	28,938	24,744	19,341
2018-1	122,475	104,026	26,935	23,831	21,823	17,075
2018-2	110,612	96,313	24,078	21,871	19,202	15,720
2018-3	122,043	103,325	25,874	22,582	20,628	16,041
2018-4	115,329	99,451	23,900	21,526	19,256	15,437
2018-5	119,343	101,295	24,944	21,747	20,174	15,489
2018-6	113,851	98,771	23,369	20,996	18,551	14,758
2018-7	113,363	97,710	23,022	20,433	18,679	14,597
2018-8	119,637	101,323	23,464	20,329	18,983	14,531
2018-9	108,659	94,428	21,575	19,459	17,089	13,741
2018-10	118,360	100,559	23,294	20,294	18,108	14,004
2018-11	113,352	97,273	22,505	19,910	17,238	13,543
2018-12	110,549	95,451	22,295	19,837	16,834	13,457
2019-1	115,875	98,072	23,099	20,083	17,411	13,430
2019-2	105,202	91,208	20,749	18,730	15,642	12,603
2019-3	112,942	96,409	22,204	19,396	16,609	12,989
2019-4	109,605	94,305	21,019	18,746	15,946	12,549
2019-5	113,461	96,112	21,787	18,920	16,276	12,606
2019-6	104,654	91,752	19,923	18,122	14,476	11,969
2019-7	109,596	93,897	21,026	18,410	15,626	12,325
2019-8	106,826	91,914	20,264	18,019	15,045	11,992
2019-9	99,325	87,451	19,041	17,378	13,900	11,531
2019-10	107,651	92,245	20,388	17,955	14,855	11,784
2019-11	98,804	86,937	19,160	17,520	13,744	11,353
2019-12	103,891	89,896	19,907	17,791	14,453	11,636
2020-1	106,390	91,606	20,123	17,911	14,499	11,622
2020-2	97,862	86,350	18,455	16,975	13,035	11,058
2020-3	101,205	87,484	19,671	17,480	13,918	11,415
2020-4	94,361	80,955	19,141	16,864	13,988	11,249
2020-5	101,160	86,891	19,402	17,173	14,020	11,382
% Change	-28%	-27%	-48%	-48%	-53%	-51%



Opioid Prescriptions with Refills Where Initial Rx is for < 15 Days Supply, by Month and Resident County, January 2017 - December 2019

	2017	2018	2019
Carson City	340	248	247
Churchill	356	185	91
Clark	16,448	13,760	12,824
Douglas	338	240	193
Elko	131	132	167
Esmeralda	2	6	1
Eureka	10	6	3
Humboldt	95	95	44
Lander	48	16	28
Lincoln	57	21	19
Lyon	303	200	170
Mineral	12	7	20
Nye	458	470	544
Pershing	27	22	12
Storey	35	28	15
Washoe	2,190	1,690	1,547
White Pine	46	17	15
Total	20,896	17,143	15,940



Note: Clark and Washoe Counties are represented separately above due to the volume of prescriptions in those regions, and so that the differences in the smaller regions can be seen in the graphs.

Opioid Prescriptions by Days Supply and Top 10 ICD-10-CM Group, 2019

< 30 Days Supply		
Top 10 Diagnosis Groups	Prescriptions	
Diseases of the Nervous System, Pain, not elsewhere classified	G89	60004
Dorsalgia	M54	52137
Other joint disorder, not elsewhere classified	M25	17024
Dental caries	K02	15644
Opioid related disorders	F11	13276
Thoracic, thoracolumbar, and lumbosacral intervertebral disc disorders	M51	13254
Pain, unspecified	R52	13124
Diseases of pulp and periapical tissues	K04	12653
Spondylosis	M47	11053
Abdominal and pelvic pain	R10	9550

>= 30 but < 90 Days Supply		
Top 10 Diagnosis Groups	Prescriptions	
Dorsalgia	M54	213,072
Thoracic, thoracolumbar, and lumbosacral intervertebral disc disorders	M51	101,101
Spondylosis	M47	97,004
Diseases of the Nervous System, Pain, not elsewhere classified	G89	47,375
Other joint disorder, not elsewhere classified	M25	36,018
Intraoperative and postprocedural complications and disorders of musculoskeletal system, not elsewhere classified	M96	30,767
Cervical disc disorder w radiculopathy, unsp cervical region	M50	22,349
Other spondylopathies	M48	17,291
Neuralgia	M79	16,805
Osteoarthritis of knee	M17	13,473

>= 90 Days Supply		
Top 10 Diagnosis Groups	Prescriptions	
Dorsalgia	M54	612
Diseases of the Nervous System, Pain, not elsewhere classified	G89	184
Thoracic, thoracolumbar, and lumbosacral intervertebral disc disorders	M51	181
Other joint disorder, not elsewhere classified	M25	143
Neuralgia	M79	125
Other and unspecified osteoarthritis	M19	101
Spondylosis	M47	92
Polyosteoarthritis	M15	82
Migraine	G43	75
Other spondylopathies	M48	55

Number of Individuals who were Co-Prescribed Benzodiazepines and Opioids in the Same Month, by Month and Resident County, January 2017 - May 2020

	Carson City	Churchill	Clark	Douglas	Elko	Esmeralda	Eureka	Humboldt	Lander	Lincoln	Lyon	Mineral	Nye	Pershing	Storey	Washoe	White Pine	Total
2017-1	730	304	23,514	583	337	5	26	114	55	71	691	60	932	48	76	4,251	101	31,898
2017-2	644	264	21,888	502	322	4	22	129	56	57	646	63	901	40	72	3,858	104	29,572
2017-3	731	308	24,266	561	396	9	28	135	49	73	724	70	961	52	73	4,234	109	32,779
2017-4	660	278	21,714	499	344	7	24	116	53	73	641	67	871	46	62	3,893	101	29,449
2017-5	722	291	23,102	552	377	7	27	116	41	70	671	56	943	55	70	4,108	124	31,332
2017-6	675	284	22,452	549	341	4	27	124	44	71	656	66	869	54	65	3,976	117	30,374
2017-7	601	251	20,910	493	358	7	22	116	43	64	588	58	810	43	55	3,626	110	28,155
2017-8	656	300	21,894	548	368	7	27	124	49	69	627	64	830	47	58	3,900	104	29,672
2017-9	625	294	19,816	511	345	6	25	104	34	62	601	56	763	42	63	3,629	98	27,074
2017-10	669	284	20,147	510	363	4	15	130	37	70	598	61	797	47	59	3,699	111	27,601
2017-11	611	258	19,286	468	337	7	20	113	36	58	614	63	722	50	56	3,529	102	26,330
2017-12	601	283	19,024	508	291	4	17	118	35	65	587	62	729	44	60	3,410	101	25,939
2018-1	586	247	17,659	447	267	6	11	94	36	61	523	42	695	37	46	3,098	99	23,954
2018-2	497	234	15,339	404	227	3	16	77	31	56	501	49	600	38	45	2,799	63	20,979
2018-3	524	228	16,486	443	264	7	15	81	26	57	508	47	671	42	55	3,027	94	22,575
2018-4	523	204	15,688	416	240	6	12	73	27	58	496	35	620	36	47	2,859	93	21,433
2018-5	514	233	15,369	427	240	4	18	70	31	60	496	38	616	37	52	2,764	99	21,068
2018-6	492	181	14,158	425	244	5	12	65	24	56	444	38	576	33	42	2,446	100	19,341
2018-7	450	192	13,651	402	243	2	10	61	31	51	450	46	560	33	43	2,362	100	18,687
2018-8	463	192	13,596	422	244	3	14	47	33	60	460	42	570	36	44	2,360	98	18,684
2018-9	432	157	12,323	362	208	3	16	36	28	47	420	37	505	35	50	2,191	88	16,938
2018-10	458	171	13,090	402	228	3	13	43	32	61	433	40	545	40	37	2,376	95	18,067
2018-11	406	187	12,245	394	222	4	11	36	37	49	424	46	493	34	37	2,187	90	16,902
2018-12	439	165	11,637	390	215	3	13	40	25	50	437	38	506	29	36	2,229	90	16,342
2019-1	446	172	12,302	363	220	3	13	35	34	57	452	47	546	32	33	2,220	83	17,058
2019-2	389	138	10,821	336	179	2	11	33	23	52	374	37	471	26	33	1,919	85	14,929
2019-3	408	80	11,488	347	203	3	7	36	27	64	415	36	497	22	31	2,121	82	15,867
2019-4	399	96	11,190	339	177	3	12	29	24	66	387	34	509	26	26	2,056	87	15,460
2019-5	394	116	11,395	336	196	2	14	25	25	62	417	37	504	26	25	2,123	83	15,780
2019-6	389	76	10,387	357	160	1	15	31	29	57	345	29	517	23	27	1,877	78	14,398
2019-7	402	85	10,533	354	179	3	9	37	22	69	343	31	484	22	25	1,911	66	14,575
2019-8	384	91	9,942	353	166	4	10	23	25	61	338	35	468	19	30	1,894	73	13,916
2019-9	367	67	9,473	304	153	2	6	22	27	43	294	25	406	21	24	1,716	67	13,017
2019-10	369	94	10,021	312	177	2	10	32	22	54	311	34	460	25	26	1,837	66	13,852
2019-11	356	77	9,055	300	158	2	3	28	23	51	279	32	417	17	21	1,656	69	12,544
2019-12	368	83	9,499	313	167	2	8	27	24	51	295	38	460	17	27	1,713	64	13,156
2020-1	349	79	9,733	316	148	2	10	30	19	59	307	39	462	18	30	1,711	72	13,384
2020-2	344	70	8,846	281	130	4	8	26	20	57	276	30	421	18	18	1,630	63	12,242
2020-3	320	78	9,444	275	136	4	5	20	13	57	296	35	454	17	24	1,662	64	12,904
2020-4	305	75	8,645	249	137	3	8	22	16	55	250	36	420	16	21	1,569	51	11,878
2020-5	300	73	8,897	268	121	3	4	23	19	58	276	34	422	21	22	1,620	48	12,209
Total	19,998	7,340	600,925	16,621	9,828	165	594	2,641	1,285	2,442	18,891	1,833	25,003	1,364	1,746	108,046	3,592	822,314
% Change	-59%	-76%	-62%	-54%	-64%	-40%	-85%	-80%	-65%	-18%	-60%	-43%	-55%	-56%	-71%	-62%	-52%	-62%

Number of Individuals who were Co-Prescribed Benzodiazepines and Opioids in the Same Month, by Month and Resident County, January 2017 - May 2020

